

# CERAMICS SUPPLY CHAIN

PREMIER LOGISTICS PARTNER  
TO EUROPE'S MAJOR TILE  
MANUFACTURERS FOR OVER  
45 YEARS.



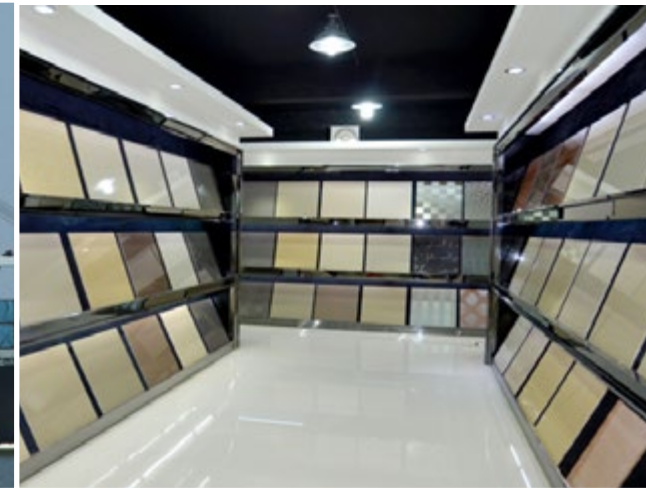
THE  
**LEINSTER**  
GROUP

**45**  
YEARS  
PREMIUM SERVICE

# FROM MANUFACTURING TO MARKET

## CONNECTING OUR CUSTOMERS WITH INTERNATIONAL MARKETS

**45** YEARS  
PREMIUM SERVICE



The Leinster Group is an Irish owned Shipping & Logistics Company with a proud tradition of providing premier forwarding and logistics solutions to European Tile Manufacturers trading in global markets for over 45 Years. We welcome the opportunity to introduce our services and discuss your unique requirements.

# CERAMICS SUPPLY CHAIN SUMMARY

## SUPPORTING OUR CUSTOMERS ENTIRE SUPPLY CHAIN

### WE ARE.....

**IRISH OWNED LOGISTICS COMPANY HANDLING CERAMIC PRODUCTS FOR OVER 45 YEARS.**

Financially sound & vetted by Dynamar

**PREMIER LOGISTICS PARTNER TO EUROPE'S LEADING CERAMIC TILE MANUFACTURERS**

Strong working trade relationships with all suppliers

### WE OFFER.....



#### INTEGRATED LOGISTICS SOLUTIONS

- Fixed lumpsum rates, door-quay, inclusive origin customs costs
- Free-time trade agreements for destinations
- Volume transport committed vendor rates



#### TRANSPORT & DISTRIBUTION

- High frequency scheduled services in all priority regions
- Curtainside deliveries at destination available
- Parcel sample Courier Services



#### DOCUMENTATION & CONTROL

- Customs Clearance & Customs AEO Approved vendor
- Deferred VAT & Duty payment options
- Full Risk Marine Insurance provider
- ITIC & ICS / QA Compliant



#### SPECIALIST CUSTOMER SUPPORT

- Dedicated department handling full container/pallet ceramics
- 'Control Tower' supply chain management & tracking
- Single point of contact

### WE SERVE.....

**GLOBAL MARKETS ELITE POWERFUL PARTNERSHIPS SETS US APART**



# INTEGRATED LOGISTICS

## COMBINING CARRIER RELATIONSHIPS AND PROCUREMENT EXPERTISE

### PRODUCTS/SERVICES

- Full container load & Pallet shipments
- Multimodal transport solutions
- Full Risk Marine Insurance cover
- Documentation & customs clearance
- Specialist customer service and regional support teams

### ADVANTAGES

- Profit from our alliance with liner & transport partners
- Customer access to privileged rates
- Choice of multiple carriers, weekly schedules to align with desired lead time (/delivery window)
- Full tracking and status events



# INSURANCE COVER

FULL RISK LLOYDS OF LONDON MARINE  
INSURANCE COVER & PROFESSIONAL  
SUPPORT

## THIS IS NOT JUST INSURANCE

THIS IS FULL RISK LLOYDS OF LONDON MARINE  
INSURANCE COVER WHICH IS FULLY COMPREHENSIVE

### WHY FULL RISK INSURANCE?

Without Full Risk Marine Insurance cover....

- your goods are not Insured for any damage in transit whatsoever / the onus is on the client to cover the goods, not the Carrier.
- you are not covered for total loss
- you are not covered in the case of General Average ( where the vessel is damaged / engine issues ) all parties onboard are liable to costs incurred.
- you are not covered for any injuries or otherwise caused by your cargo whilst in transit.



**IT HAPPENS**

**WITHOUT COVER THE RISK IS  
THE CARGO OWNERS**

# ELITE GLOBAL NETWORK

## MARKET SPECIALISTS IN KEY MANUFACTURING REGIONS

### SPAIN: CASTELLON REGION

- Weekly Container services on three routes with transits of 3, 7 & 14 days
- Weekly Groupage/Pallet services offering, door/door, Import & Export services
- Parcel sample Courier services

### ITALY: MODENA REGION

- Weekly Container services with transits of 7 & 16 days
- Weekly Groupage/Pallet services offering door/door, Import & Export services
- Parcel sample Courier Services
- 20'/30'/40' Container options available

### POLAND, CZECH REPUBLIC, TURKEY, VIETNAM, INDIA

- Fully integrated services for the Ceramic trade from other niche trades
- Curtainside deliveries at destination available
- Intermodal services throughout Europe into Ireland & the UK
- Customs Clearance and deferred VAT & Duty payment options



### CHINA: FOSHAN REGION

- Twice Weekly services from Shenzhen / Foshan / Xiamen / Qingdao
- Regional offices throughout mainland China
- All co-ordinated through our Hub office in Shanghai
- Groupage / Pallet services
- Origin collections in China as well as clearance and ORC available
- Our office is open from 07:00 so we can deal directly with China before our competitors

**+ 100**  
COUNTRIES

**+ 750**  
PORTS

# SPECIALIST SUPPORT TEAM

## DEDICATED DEPARTMENT FOR SUPPLY CHAIN SOLUTIONS



### KEY CONTACTS:



**ROBERT McMILLAN**

**DIRECTOR SALES & MARKETING**

**Direct:** (353) 1 6521134

**Email:** robertmcmillan@leinstershipping.com



**SINEAD DALY**

**SUPPLY CHAIN OPERATIONS**

**Direct:** (353) 1 6521133

**Email:** sineaddaly@leinstershipping.com



**STEPHEN LONG**

**CUSTOMER SERVICES**

**Direct:** (353) 1 6521136

**Email:** cs@leinstershipping.com

### REGIONAL OPERATIONS:

**SPAIN & ITALY**

**Email:** Ops1@leinstershipping.com

**TURKEY & EASTERN EUROPE**

**Email:** Ops2@leinstershipping.com

**INDIA & CHINA**

**Email:** Ops3@leinstershipping.com

**THANK YOU.**

**45**  
YEARS  
PREMIUM SERVICE

**LEINSTER SHIPPING GROUP**

27 Fitzwilliam Square South

Dublin 2

D02 TX60

IRELAND

t: (353) 1 6761626

[www.theleinstergroup.com](http://www.theleinstergroup.com)